

Bradshaw's Cave
Asham

Bradshaw's Cave explored Feb 2015 — May 2016

Photo Book put together by A Watson March 2024



Inside the No.1
Entrance Passage

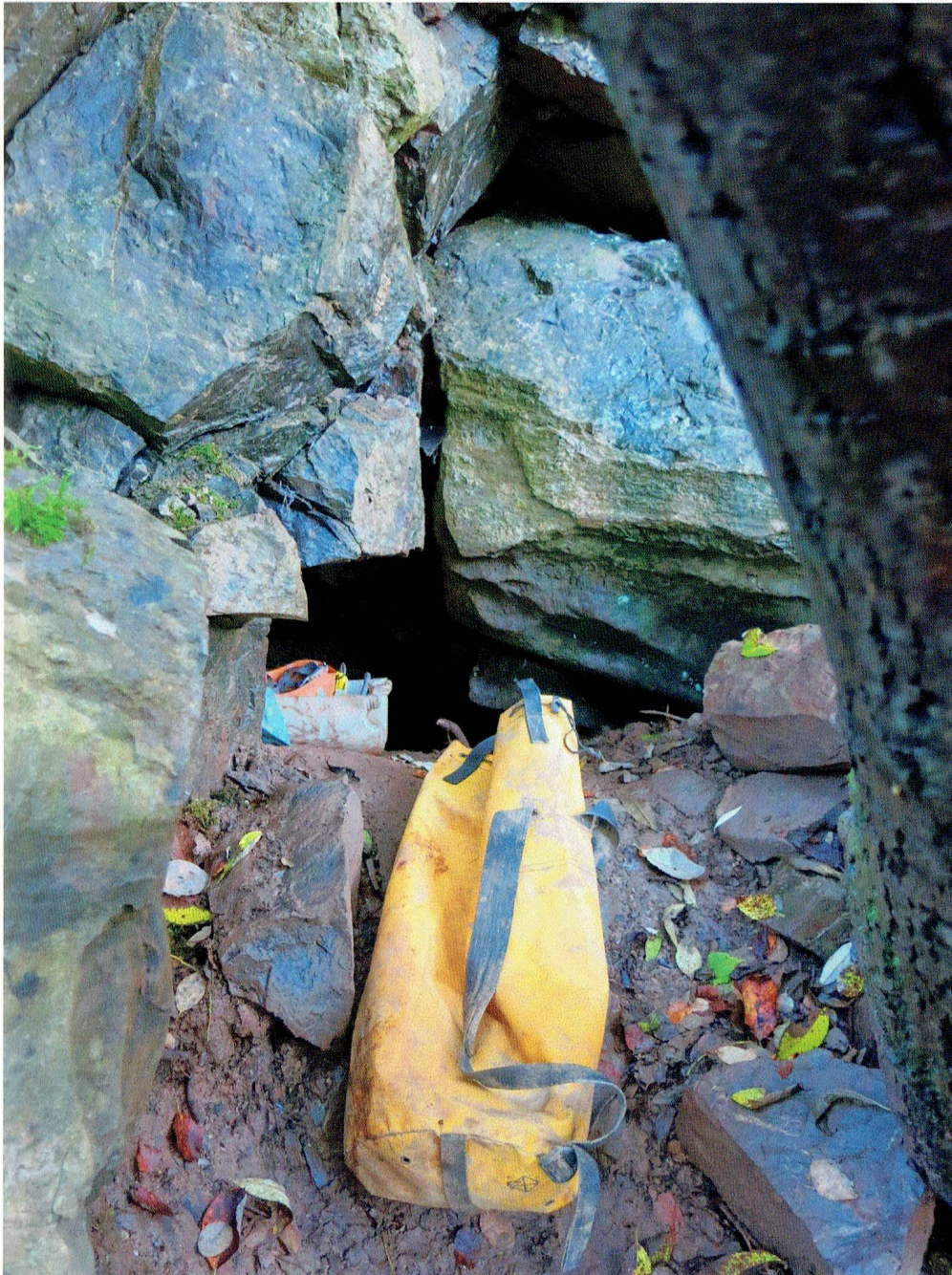




Entrance No.2 and the
Badger Bones >



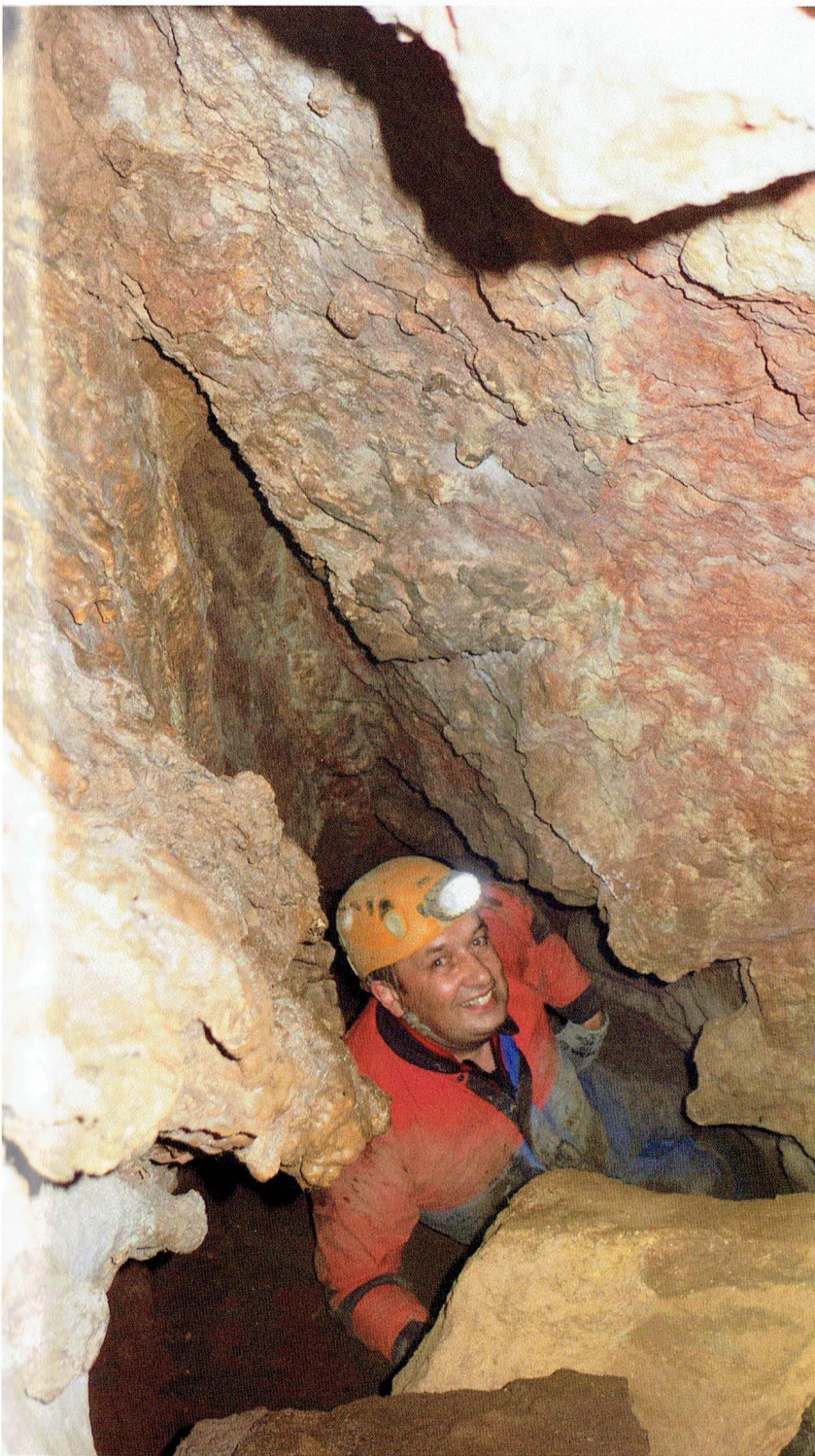
Entrance No.3 and the squeeze below





< After the
squeeze at the
end of the 1st
Entrance passage
& below in The
Long Straight





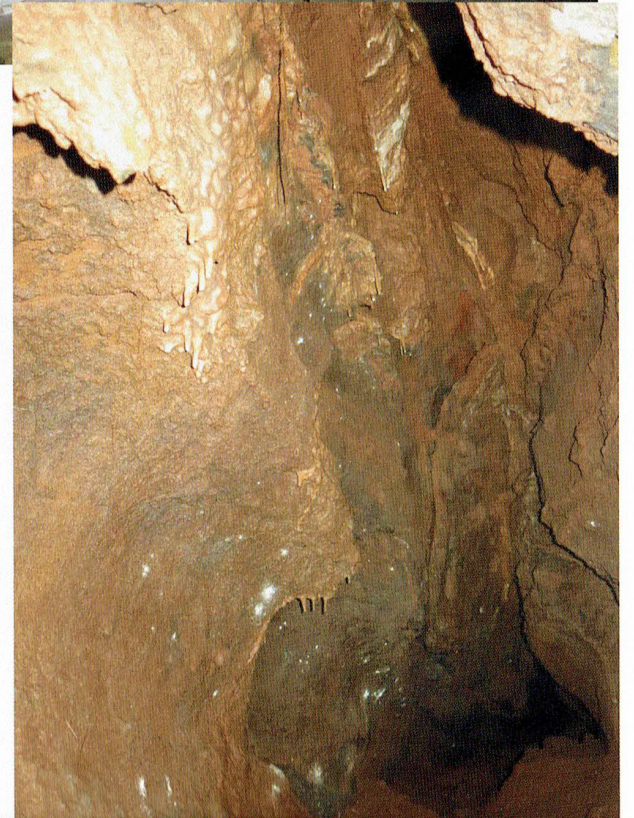
< After the initial
squeeze & below
crawling in The
Long Straight
(100 foot)



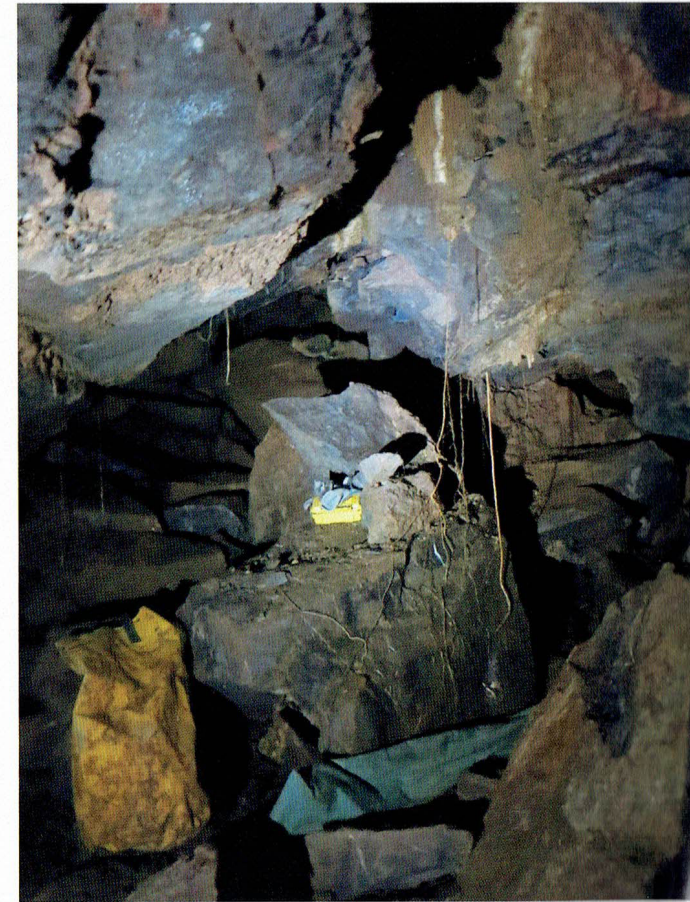
After the Corkscrew near
Hoveringham's Chamber



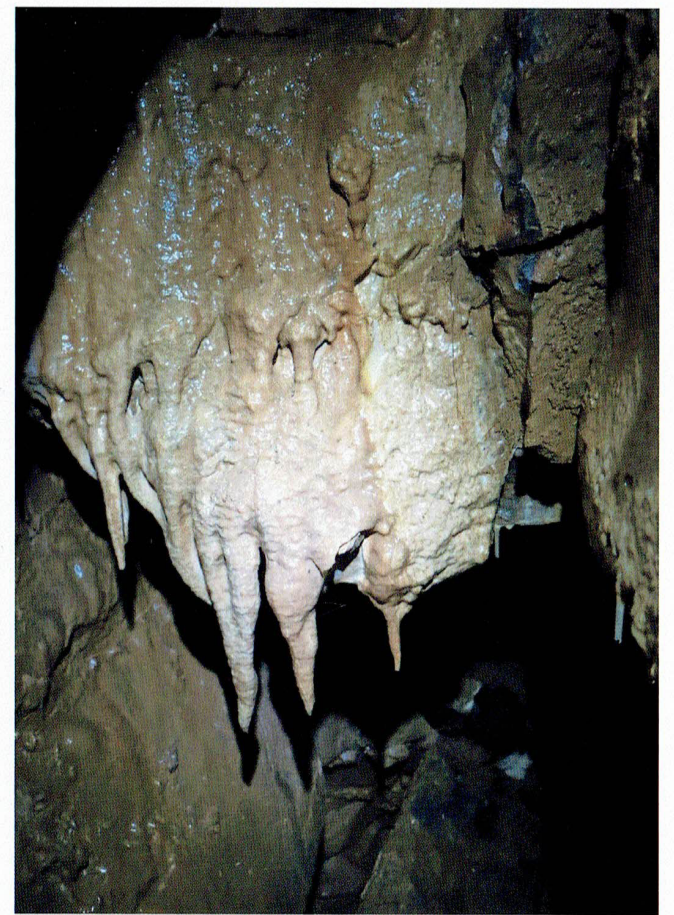
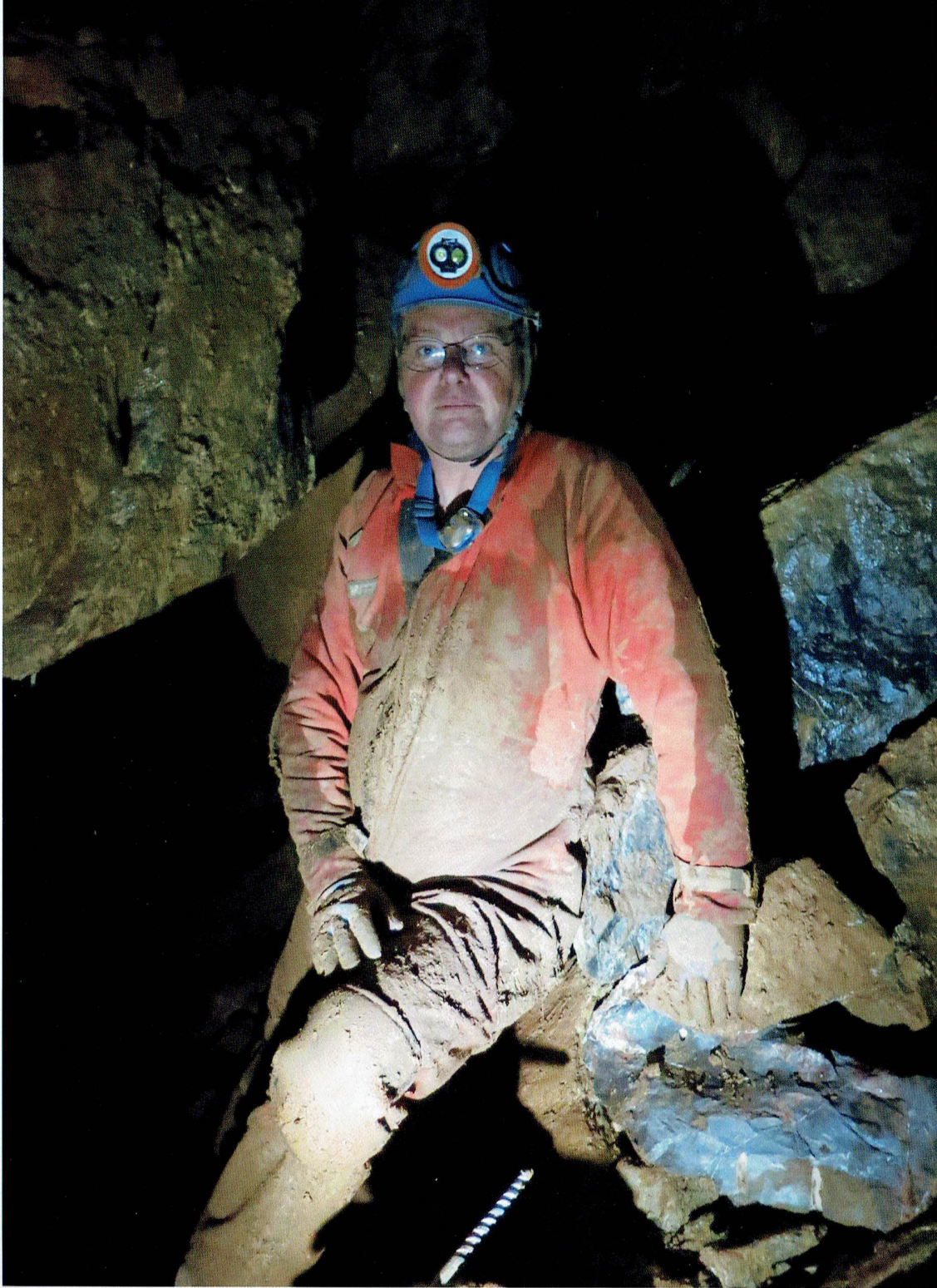
Hoveringham's Chamber



Hoveringham's Chamber and the
small way on >>

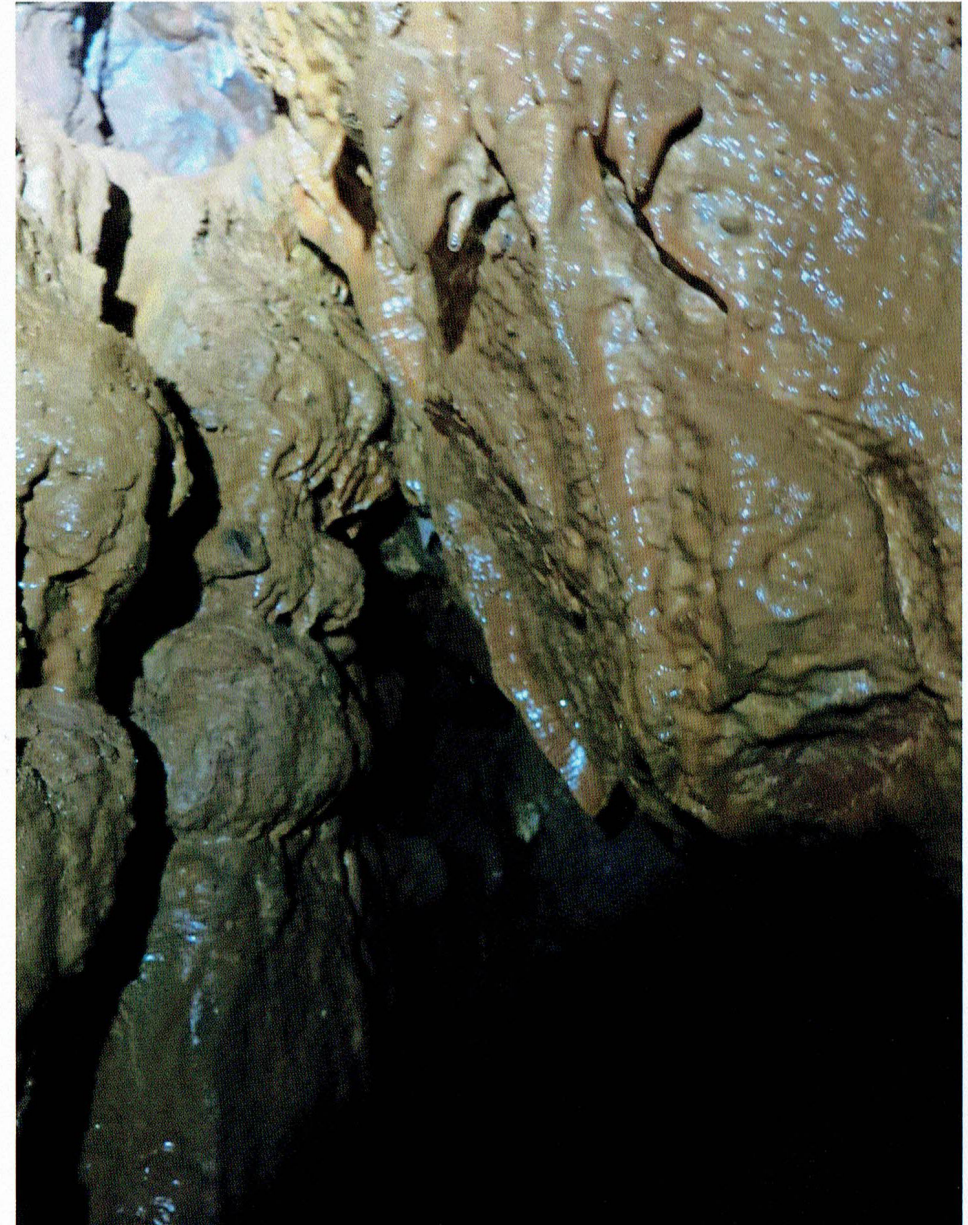


Views in Breakdown Chamber
After crawling along Fat Lip passage



Paul in Breakdown Chamber & the formations





Above: Looking for the way-on
Right: The tiny squeeze way-on



Calcited stream flow floor between Breakdown Chamber and April Passage



Calcified blocks before the start of April Passage



The 'open' start of April Passage

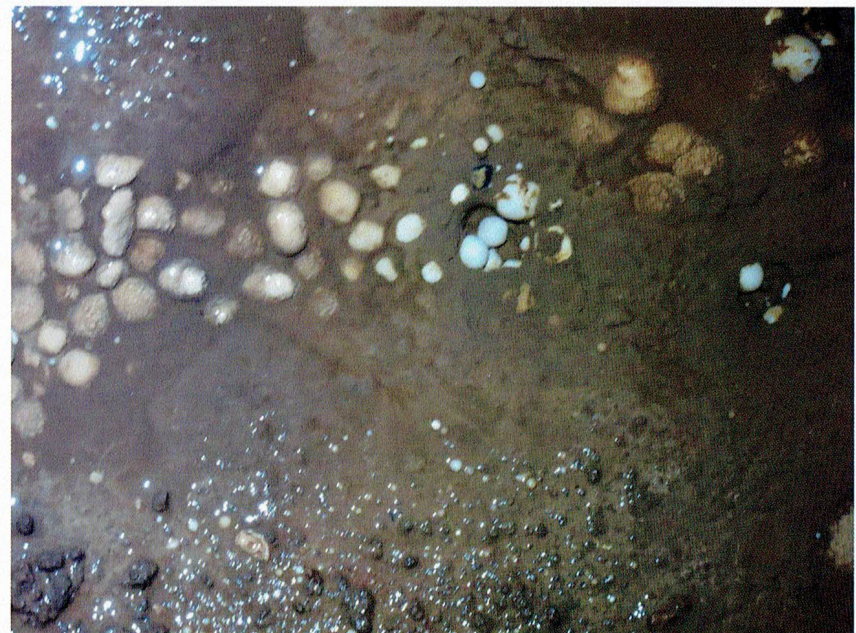
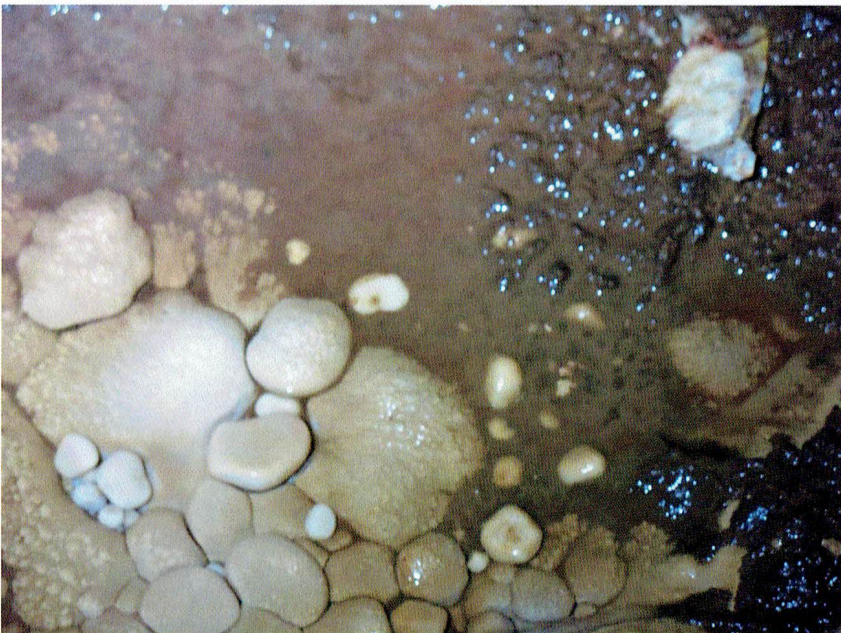
April Passage formations





Further along
April Passage +
Taped pearls

April Passage, flowstone & cave pearls



< 'Thank Aven'
and below the
black floor block



Thank Aven's way-
on passage >





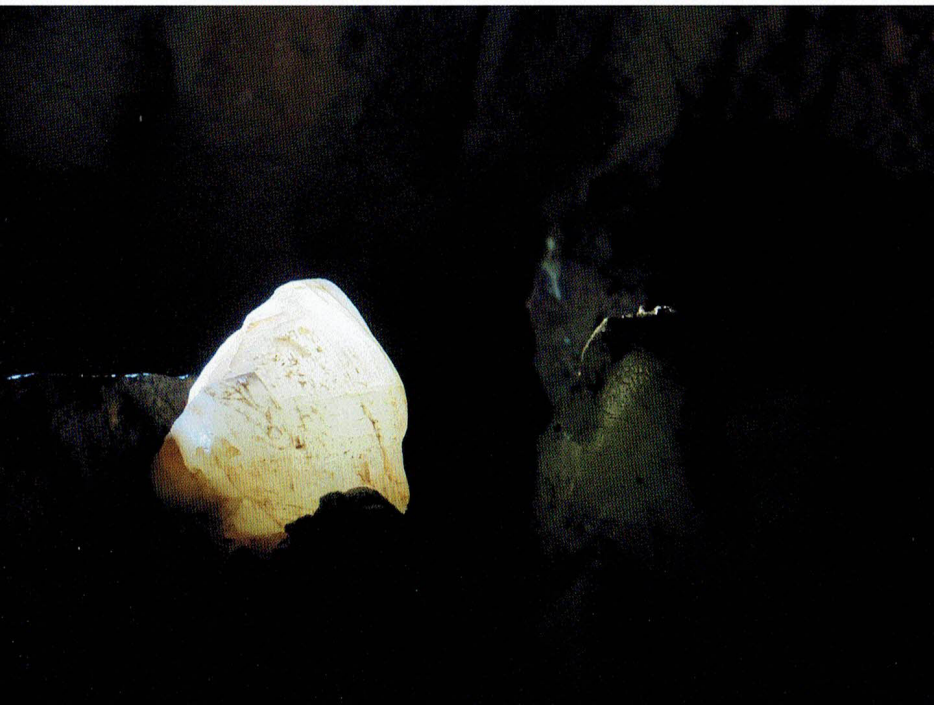
Blackstone Engine Formation

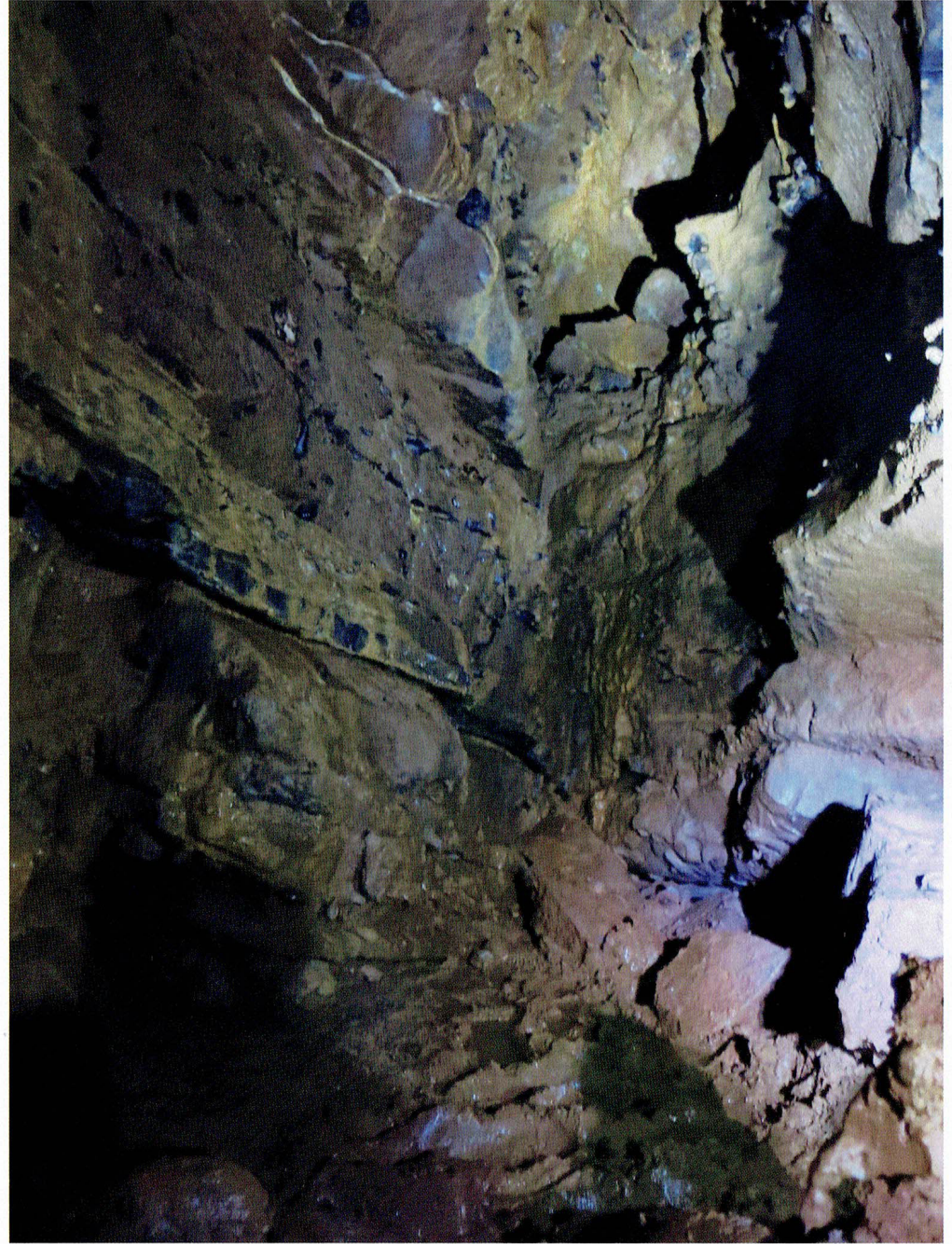
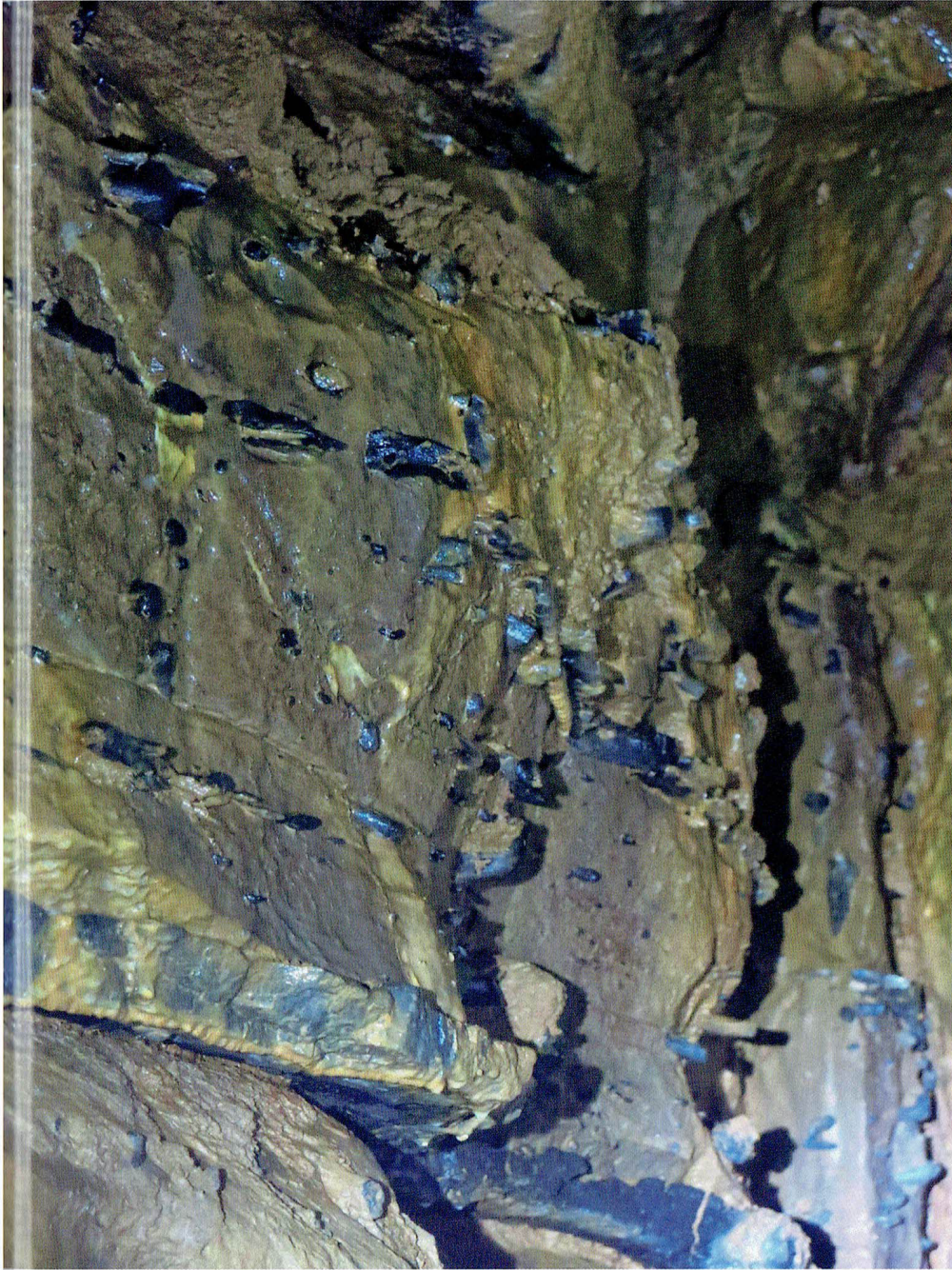


Care required near this very unusual formation; black sediment filled limestone, then limestone dissolved away leaving black now petrified sediment - very fragile



Crystals at Incline Aven





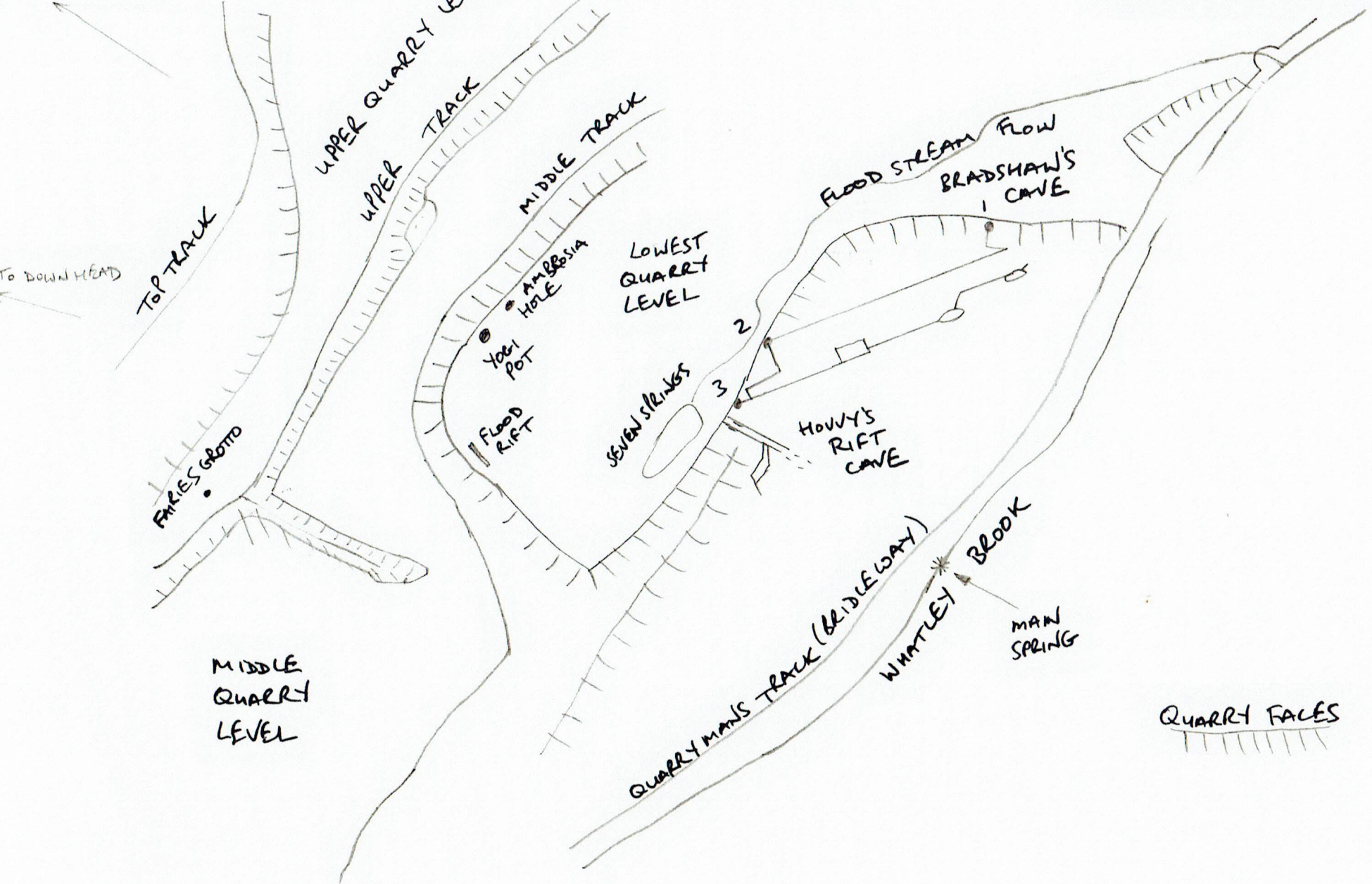
Incline Aven



ASHAMWOOD QUARRY

TROTHER SINK

To DOWN HEAD



TOP TRACK

UPPER QUARRY LEVEL
UPPER TRACK

MIDDLE TRACK

LOWEST QUARRY LEVEL

FLOOD STREAM FLOW
BRADSHAW'S CAVE

FARIES GROTTO

Yogi POT

AMBROSIA HOLE

FLOOD RIFT

SEVEN SLINGS

HOUVY'S RIFT CAVE

MIDDLE QUARRY LEVEL

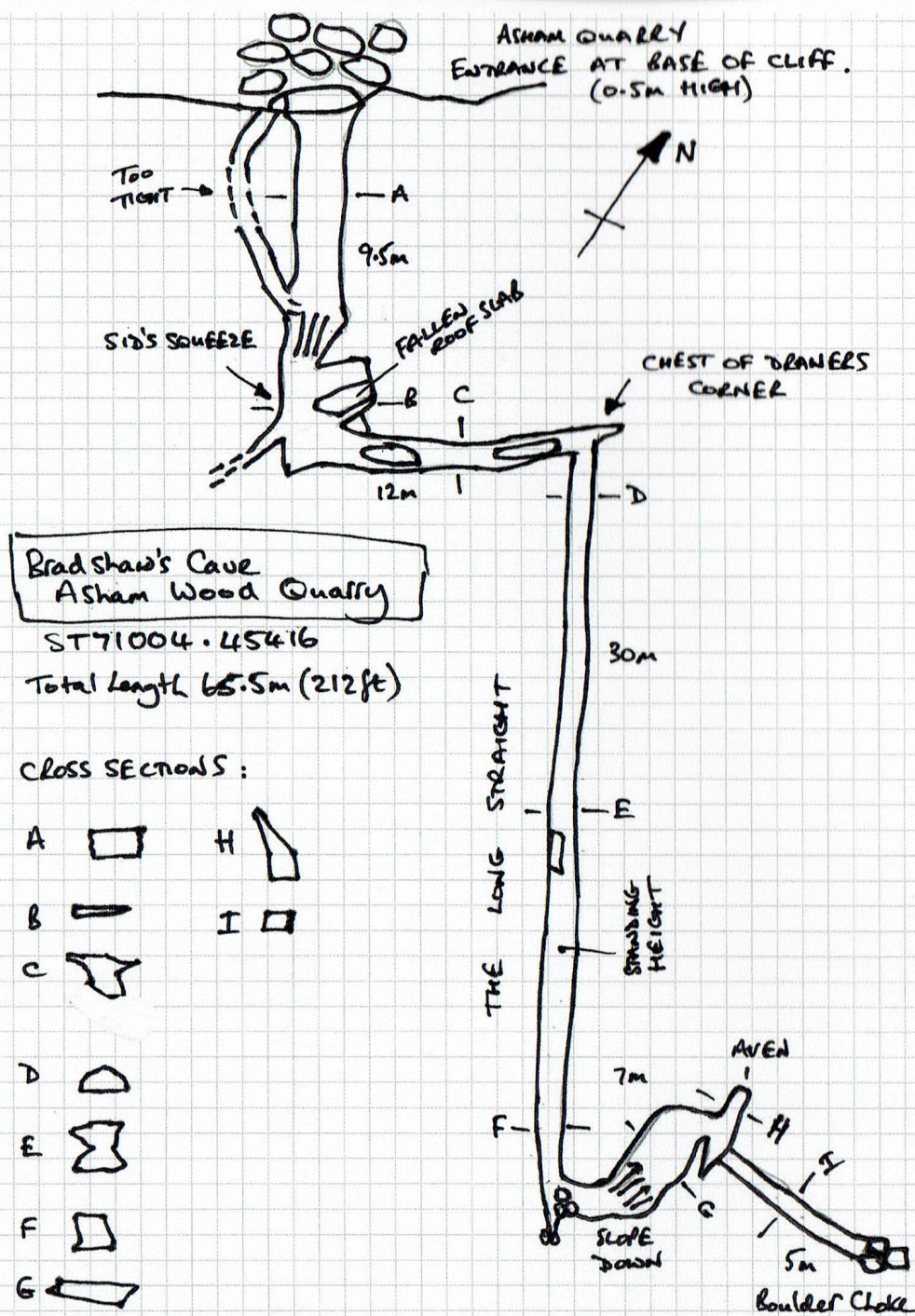
QUARRY MAN'S TRACK (BRIDLEWAY)

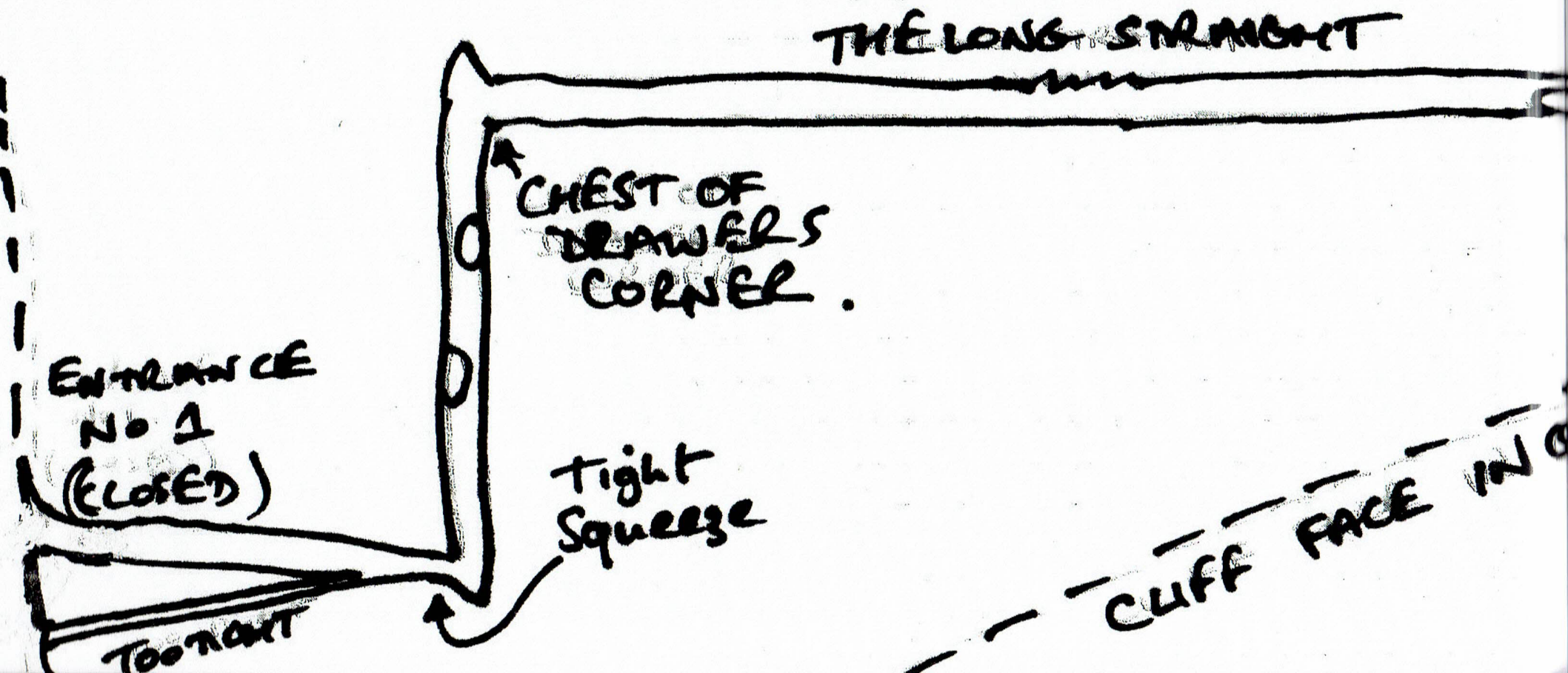
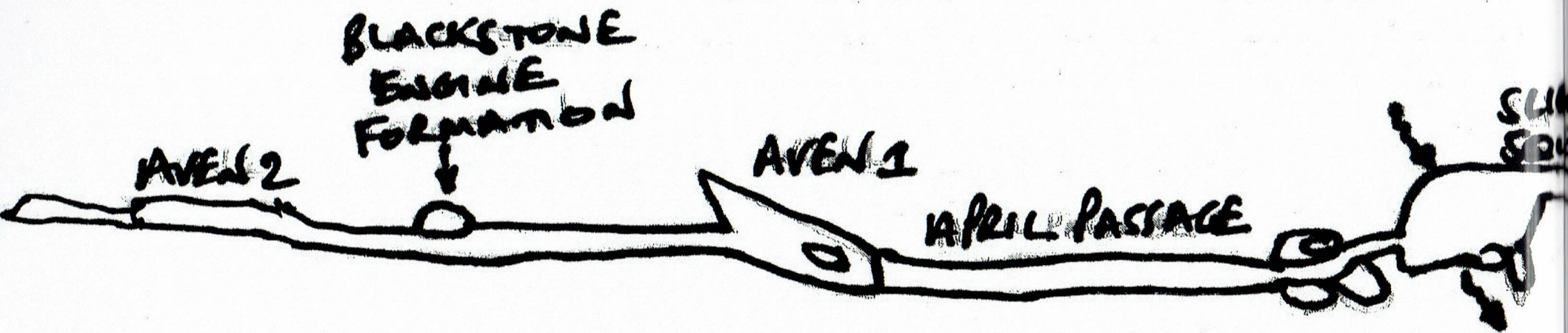
WHARTLEY BROOK

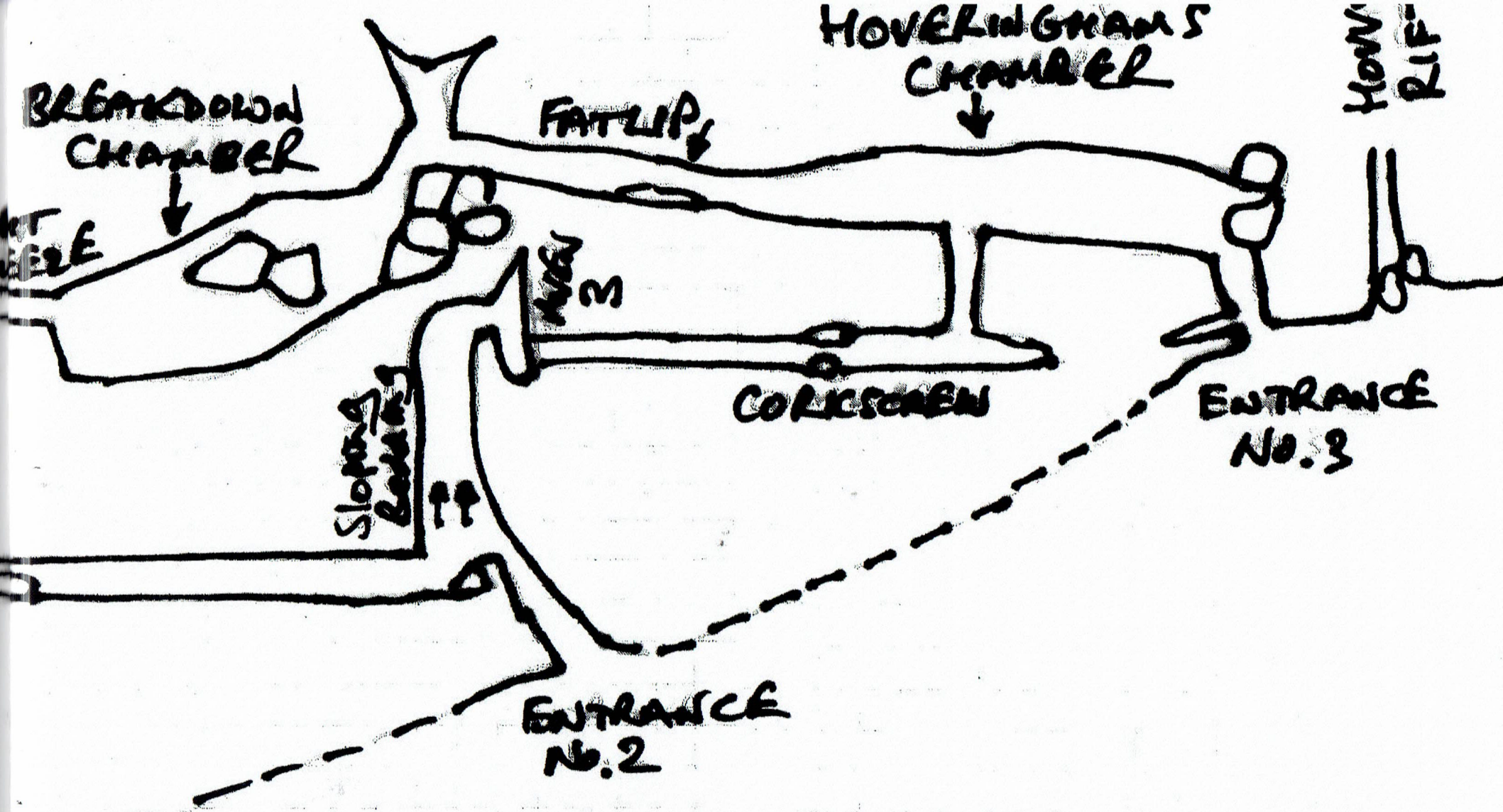
MAN SPRING

QUARRY FACES

< Bradshaw's location and
First sketch survey >>



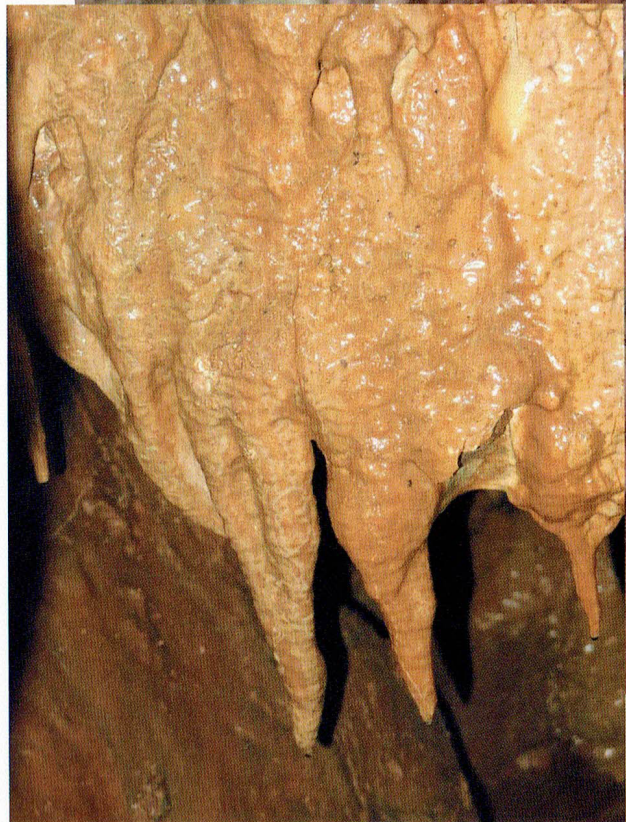




SHARLY

Bradshaw's Cave
 Ashan Wood Quarry
 5m

LENGTH 155m (503 feet)
 (Height range 0-3m)



Shhhh! and look after this cave...



3/4 T84013968 Photocover



B

T84013969